



MarLIN

Marine Information Network

Information on the species and habitats around the coasts and sea of the British Isles

Common lobster (*Homarus gammarus*)

MarLIN – Marine Life Information Network
Marine Evidence-based Sensitivity Assessment (MarESA) Review

Emily Wilson

2008-05-08

A report from:

The Marine Life Information Network, Marine Biological Association of the United Kingdom.

Please note. This MarESA report is a dated version of the online review. Please refer to the website for the most up-to-date version [<https://www.marlin.ac.uk/species/detail/1171>]. All terms and the MarESA methodology are outlined on the website (<https://www.marlin.ac.uk>)

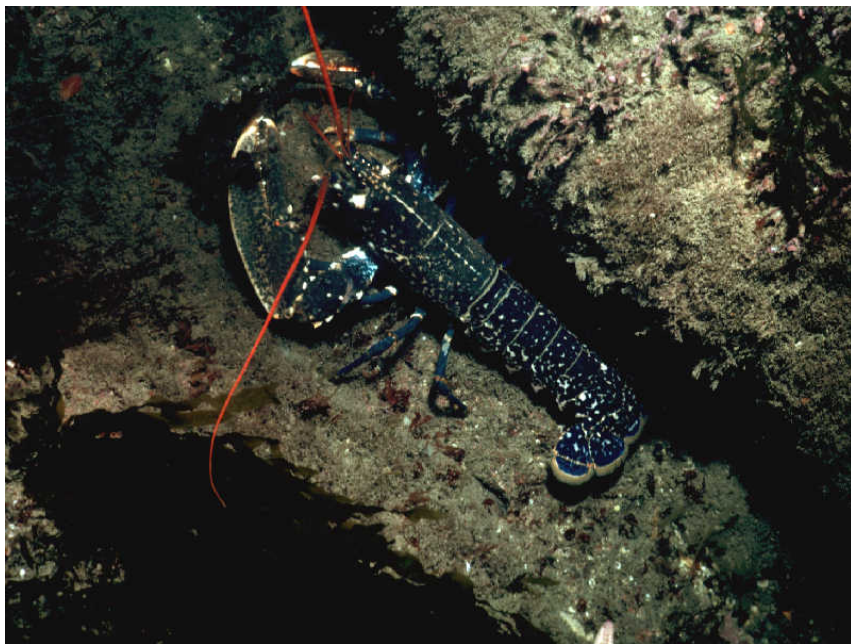
This review can be cited as:

Wilson, E. 2008. *Homarus gammarus* Common lobster. In Tyler-Walters H. and Hiscock K. (eds) *Marine Life Information Network: Biology and Sensitivity Key Information Reviews*, [on-line]. Plymouth: Marine Biological Association of the United Kingdom. DOI <https://dx.doi.org/10.17031/marlin.sp.1171.1>



The information (TEXT ONLY) provided by the Marine Life Information Network (MarLIN) is licensed under a Creative Commons Attribution-Non-Commercial-Share Alike 2.0 UK: England & Wales License. Note that images and other media featured on this page are each governed by their own terms and conditions and they may or may not be available for reuse. Permissions beyond the scope of this license are available [here](#). Based on a work at www.marlin.ac.uk

(page left blank)



Homarus gammarus, dorsal view.
 Photographer: Keith Hiscock
 Copyright: Dr Keith Hiscock

See online review for
 distribution map

Distribution data supplied by the Ocean
 Biogeographic Information System (OBIS). To
 interrogate UK data visit the NBN Atlas.

Researched by	Emily Wilson	Refereed by	Admin
Authority	(Linnaeus, 1758)		
Other common names	-	Synonyms	-

Summary

🔍 Description

A large lobster that can grow up to one metre in length, but 50 cm is more common. It is blue-coloured above with coalescing spots and yellowish below. The first pair of walking legs carry massive (but slightly unequal) pincers which can be formidable and dangerous. The body lacks strong spines or ridges and is only slightly granular.

📍 Recorded distribution in Britain and Ireland

All British and Irish coasts.

📍 Global distribution

-

🏠 Habitat

It is found on rocky substrata, living in holes and excavated tunnels from the lower shore to about 60 m depth.

↓ Depth range

-

🔍 Identifying features

- Large eyes, same width as eye stalks.
- Spine-like antennal scale.
- Rostrum rather short and spiny.
- Strong gastro-orbital groove with, below it, the cervical groove.
- Chelae large.

Additional information

No text entered

Listed by

Further information sources

Search on:

Bibliography

- Campbell, A., 1994. *Seashores and shallow seas of Britain and Europe*. London: Hamlyn.
- Hayward, P., Nelson-Smith, T. & Shields, C. 1996. *Collins pocket guide. Sea shore of Britain and northern Europe*. London: HarperCollins.
- Hayward, P.J. & Ryland, J.S. (ed.) 1995b. *Handbook of the marine fauna of North-West Europe*. Oxford: Oxford University Press.
- Howson, C.M. & Picton, B.E., 1997. *The species directory of the marine fauna and flora of the British Isles and surrounding seas*. Belfast: Ulster Museum. [Ulster Museum publication, no. 276.]
- JNCC (Joint Nature Conservation Committee), 1999. *Marine Environment Resource Mapping And Information Database (MERMAID): Marine Nature Conservation Review Survey Database*. [on-line] <http://www.jncc.gov.uk/mermaid>
- Picton, B.E. & Costello, M.J., 1998. *BioMar biotope viewer: a guide to marine habitats, fauna and flora of Britain and Ireland*. [CD-ROM] *Environmental Sciences Unit, Trinity College, Dublin*.

Datasets

- Bristol Regional Environmental Records Centre, 2017. BRERC species records within last 15 years. Occurrence dataset: <https://doi.org/10.15468/vntgox> accessed via GBIF.org on 2018-09-25.
- Centre for Environmental Data and Recording, 2018. Ulster Museum Marine Surveys of Northern Ireland Coastal Waters. Occurrence dataset <https://www.nmni.com/CEDaR/CEDaR-Centre-for-Environmental-Data-and-Recording.aspx> accessed via NBNAtlas.org on 2018-09-25.
- Cofnod – North Wales Environmental Information Service, 2018. Miscellaneous records held on the Cofnod database. Occurrence dataset: <https://doi.org/10.15468/hcgqsi> accessed via GBIF.org on 2018-09-25.
- Environmental Records Information Centre North East, 2018. ERIC NE Combined dataset to 2017. Occurrence dataset: <http://www.ericnortheast.org.uk/home.html> accessed via NBNAtlas.org on 2018-09-38
- Fenwick, 2018. Aphotomarine. Occurrence dataset <http://www.aphotomarine.com/index.html> Accessed via NBNAtlas.org on 2018-10-01
- Fife Nature Records Centre, 2018. St Andrews BioBlitz 2014. Occurrence dataset: <https://doi.org/10.15468/erweal> accessed via GBIF.org on 2018-09-27.
- Fife Nature Records Centre, 2018. St Andrews BioBlitz 2015. Occurrence dataset: <https://doi.org/10.15468/xtrbvj> accessed via GBIF.org on 2018-09-27.
- Isle of Wight Local Records Centre, 2017. IOW Natural History & Archaeological Society Marine Invertebrate Records 1853-2011. Occurrence dataset: <https://doi.org/10.15468/d9amhg> accessed via GBIF.org on 2018-09-27.
- Kent Wildlife Trust, 2018. Kent Wildlife Trust Shoresearch Intertidal Survey 2004 onwards. Occurrence dataset: <https://www.kentwildlifetrust.org.uk/> accessed via NBNAtlas.org on 2018-10-01.
- Manx Biological Recording Partnership, 2017. Isle of Man wildlife records from 01/01/2000 to 13/02/2017. Occurrence dataset: <https://doi.org/10.15468/mopwow> accessed via GBIF.org on 2018-10-01.
- Manx Biological Recording Partnership, 2018. Isle of Man historical wildlife records 1990 to 1994. Occurrence dataset: <https://doi.org/10.15468/aru16v> accessed via GBIF.org on 2018-10-01.
- Merseyside BioBank., 2018. Merseyside BioBank (unverified). Occurrence dataset: <https://doi.org/10.15468/iou2ld> accessed via GBIF.org on 2018-10-01.
- National Trust, 2017. National Trust Species Records. Occurrence dataset: <https://doi.org/10.15468/opc6g1> accessed via GBIF.org on 2018-10-01.
- NBN (National Biodiversity Network) Atlas. Available from: <https://www.nbnatlas.org>.
- OBIS (Ocean Biogeographic Information System), 2019. Global map of species distribution using gridded data. Available from: Ocean Biogeographic Information System. www.iobis.org. Accessed: 2019-03-12
- South East Wales Biodiversity Records Centre, 2018. SEWBReC Myriapods, Isopods, and allied species (South East Wales). Occurrence dataset: <https://doi.org/10.15468/rvxsgs> accessed via GBIF.org on 2018-10-02.